



# Montessori Mail



April 2016

## Events for Term 2

Monday 2nd May	Start Term 2
Friday 6th May	Mother's Day Picnic Lunch Centre of NZ
9th-13th May	Wheelie Week
Thurs 12th	Wheels Day (scooters + bikes etc)
Monday 16th May	Parent Info Session– Montessori Geography
Wed 1st June	Brook Sanctuary Visit–6 oldest
Monday 6th June	Queen's Birthday (closed)
Wed 8th June	Farewell Morning tea for Jess and Ingrid
Mon 13th June	Suzette starts
Wed 15th June	Matariki Lantern Festival Victory Community Event
Tuesday 22nd June	Community Meeting
Friday 8th July	Last day of term

Other events without confirmed dates: Transition to school visit (Hampden Street) and Brenda Holdaway parent talk.

## Mother's Day Celebration

**Friday 8th May**

As we had such a nice outing last year up the Matai, we have decided to go on another outing in the beautiful Nelson. This year we will be going to the Centre of NZ (Botanics field) where we will go for a walk, followed by a picnic lunch. We will provide the food so all we ask is that you come along with your walking shoes and enjoy the company of other Kauri Mums and their tamariki!

Check out the consent form for more details when you're signing in on Monday!!

Our tamariki have also got something special that they are going to make for you!

Tena kotou matua ma!

## Parent Evening– Monday 16th May Montessori Geography

Come and learn about the way in which we introduce Geography to children using the Montessori Method, and it's awesome resources!

7-8:30pm. Supper provided. A good chance for an informal catch up with other parents and staff.

Mark it on your calendars now!



## Matariki & Lantern Festival

This year we are going to celebrate Matariki by getting involved in the Victory Community and attending the annual lantern festival again. This will be on Wednesday 15th June from 4:30pm-6:30pm and has a slightly different format than last year. More details will be emailed out when we know more.

Please let us know if you would like to come in and share your 'Matariki' story.

## Wheelie Week

Week 2 **9th– 13th May**



After discussions within our team, and at our last Community meeting we decided to have a focus week on 'transport with wheels'. We have planned to educate our tamariki about bike and scooter safety, how bikes work (cogs etc), care of bikes etc. We have included science, math and language (new vocab) based activities into this plan.

We have invited Jon O'donovan (police officer) in to speak to the children about keeping safe on our streets.

Thursday the 12th is the day when children can bring in their bikes or scooters etc, and we will set up an area in the car park where they can show off their skills! We will put up a sign up sheet for helpers as we will require some extra supervision at this time.

# Page 2

## Letter of the Week

As you are probably aware, we have been introducing a 'letter' each week during our group mat time. We have a small table on which they can bring small items from home that begin with that letter. At Montessori we teach phonetic sounds, not the name of the letter, as the children learn to read phonetically.



## Culture Table

We celebrate a culture from our community each month. This term we will learn about Sri Lanka and we will also celebrate Matariki and Maori culture. We would love it if you could come in and share your culture through music, food, costumes, stories, arts etc.

## Term 2 Menu

**Monday**

**Sushi Rice Salad with Salmon and cheese cubes.**

**Tuesday**

**Vege Pasta Bake with our homemade tomato sauce. Yoghurt for dessert.**

**Wednesday**

**Vegetable Soup, homemade bread rolls and cheese cubes.**

**Thursday**

**Falafel and tortilla wraps with carrot, lettuce, cheese and mint yoghurt dressing. Fruit platter**

**Friday**

**Vegetable and Coconut Curry with riata and a hard boiled egg. (Fruit platter served after main every day)**



## **Transition to School- Hampden Street**

In the holidays Jane attended a course through the kindergarten association, about 'transitioning children into school'. We look forward to hearing all about it!

If you have any questions regarding transitioning your child into school then please approach Jane. She will be taking our 5/6 oldest children to visit Hampden Street School this term.

## **Community Meeting**

(with Nissa and Kauri Community)

Wednesday 22nd June. There will be a sign-up sheet out closer to the time with an agenda. This is a chance for you to have some input into the decisions we make for our children and for Kauri.

## **Brook Sanctuary Visit (with 6 oldest)**

Last term we joined Stoke Montessori in taking our 6 oldest children to The Brook Waimarama Sanctuary, as part of a new termly initiative.

More details will be sent out to the whanau of our 6 oldest children.

**If you wish to help out on this trip keep the Wednesday 1st June free!**



## **Farewell Morning Tea for Jess and Ingrid**

Join us on Wednesday 8th June from 10-10:45 for morning tea and a catch up before they go! More details still to come!

# Notices



## Profile Books

We will write 'story' in the comments column of the sign-in sheet when there is a new story in your child's book. You may take your child's book home but ask that you return it once you've finished reading and adding comments etc. We will aim to have at least two individual stories as well as a group story, art and other relevant work each term. We will include a 'Parent's voice' bubble for your feedback/input as this helps us to learn about what your child gets up to when they are not here! The profile books are also a source of communication between us (kaiako) and you (the whanau). Feel free to add your own photos or stories from home :-)

## Notices

- ☺ **We would love your egg shells for crushing and putting on our garden please.**
- ☺ **Please may we have your spare plastic bags.**
- ☺ **Please remember that if you wish to speak with staff us about any concerns you might have or just to discuss your child's development you can either pull one of us aside in the morning or if you wish to have a longer discussion you can make a time before 9am or after 3pm to come and meet with us.**
- ☺ **We love having whanau in to Kauri to share their hobbies. Interests etc. E.g. Sara (Will's Mum) came in to share a food growing project with us and planted seeds with the tamariki. Let us know if you have time to spare and want to come in!**
- ☺ **If your child comes home in spare 'Kauri' clothes, please return asap as they are used on a daily basis due to water play and wet sand! Many thanks!**
- ☺ **Remember that if you are waiting at pick-up times, you can look at your child's profile book and make comments on the stories (write in the white spaces). You can also take a squizz at the class journal to see what's been happening during the term.**

## Important Reminder

- \* Please note that some children are enrolled to start at 8:45am and 9 am. If you wish your child to start early please feel free to speak to the staff and have your child's enrolment changed.
- \* If you need to drop your child early on a 'one off' occasion please make necessary arrangements with a staff before hand.
- \* **We send children down to put their shoes on and wait by their bags at 12:55pm or 2:55pm. If you are late then this means a staff member has to supervise your child until you arrive. After 1pm and 3pm Staff have other commitments (work or personal) and if you know you wont be there on time then please phone so that we can direct your child as necessary. We generally have afternoon tea at 2:30pm so if you need to pick up 10 or 15 minutes early then that's fine.**

We appreciate your co-operation. Thanks



# Montessori Mail



April 2016

## Events for Term 2

Monday 2nd May	Start Term 2
Friday 6th May	Mother's Day Picnic Lunch Centre of NZ
9th-13th May	Wheelie Week
Thurs 12th	Wheels Day (scooters + bikes etc)
Monday 16th May	Parent Info Session— Montessori Geography
Wed 1st June	Brook Sanctuary Visit—6 oldest
Monday 6th June	Queen's Birthday (closed)
Wed 8th June	Farewell Morning tea for Jess and Ingrid
Mon 13th June	Suzette starts
Wed 15th June	Matariki Lantern Festival Victory Community Event
Tuesday 22nd June	Community Meeting
Friday 8th July	Last day of term

Other events without confirmed dates: Transition to school visit (Hampden Street) and Brenda Holdaway parent talk.

## Mother's Day Celebration

**Friday 8th May**

As we had such a nice outing last year up the Matai, we have decided to go on another outing in the beautiful Nelson. This year we will be going to the Centre of NZ (Botanics field) where we will go for a walk, followed by a picnic lunch. We will provide the food so all we ask is that you come along with your walking shoes and enjoy the company of other Kauri Mums and their tamariki!

Check out the consent form for more details when you're signing in on Monday!!

Our tamariki have also got something special that they are going to make for you!

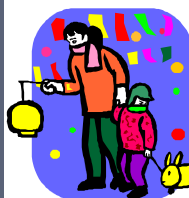
Tena kotou matua ma!

## Parent Evening— Monday 16th May Montessori Geography

Come and learn about the way in which we introduce Geography to children using the Montessori Method, and it's awesome resources!

7-8:30pm. Supper provided. A good chance for an informal catch up with other parents and staff.

Mark it on your calendars now!



## Matariki & Lantern Festival

This year we are going to celebrate Matariki by getting involved in the Victory Community and attending the annual lantern festival again. This will be on Wednesday 15th June from 4:30pm-6:30pm and has a slightly different format than last year. More details will be emailed out when we know more.

Please let us know if you would like to come in and share your 'Matariki' story.

## Wheelie Week

Week 2 **9th— 13th May**



After discussions within our team, and at our last Community meeting we decided to have a focus week on 'transport with wheels'. We have planned to educate our tamariki about bike and scooter safety, how bikes work (cogs etc), care of bikes etc. We have included science, math and language (new vocab) based activities into this plan.

We have invited Jon O'donovan (police officer) in to speak to the children about keeping safe on our streets.

Thursday the 12th is the day when children can bring in their bikes or scooters etc, and we will set up an area in the car park where they can show off their skills! We will put up a sign up sheet for helpers as we will require some extra supervision at this time.



# Page 2

## Letter of the Week

As you are probably aware, we have been introducing a 'letter' each week during our group mat time. We have a small table on which they can bring small items from home that begin with that letter. At Montessori we teach phonetic sounds, not the name of the letter, as the children learn to read phonetically.



## Culture Table

We celebrate a culture from our community each month. This term we will learn about Sri Lanka and we will also celebrate Matariki and Maori culture. We would love it if you could come in and share your culture through music, food, costumes, stories, arts etc.

## Term 2 Menu

**Monday**

**Sushi Rice Salad with Salmon and cheese cubes.**

**Tuesday**

**Vege Pasta Bake with our homemade tomato sauce. Yoghurt for dessert.**

**Wednesday**

**Vegetable Soup, homemade bread rolls and cheese cubes.**

**Thursday**

**Falafel and tortilla wraps with carrot, lettuce, cheese and mint yoghurt dressing. Fruit platter**

**Friday**

**Vegetable and Coconut Curry with riata and a hard boiled egg. (Fruit platter served after main every day)**



## **Transition to School- Hampden Street**

In the holidays Jane attended a course through the kindergarten association, about 'transitioning children into school'. We look forward to hearing all about it!

If you have any questions regarding transitioning your child into school then please approach Jane. She will be taking our 5/6 oldest children to visit Hampden Street School this term.

## **Community Meeting**

(with Nissa and Kauri Community)

Wednesday 22nd June. There will be a sign-up sheet out closer to the time with an agenda. This is a chance for you to have some input into the decisions we make for our children and for Kauri.

## **Brook Sanctuary Visit (with 6 oldest)**

Last term we joined Stoke Montessori in taking our 6 oldest children to The Brook Waimarama Sanctuary, as part of a new termly initiative.

More details will be sent out to the whanau of our 6 oldest children.

**If you wish to help out on this trip keep the Wednesday 1st June free!**



## **Farewell Morning Tea for Jess and Ingrid**

Join us on Wednesday 8th June from 10-10:45 for morning tea and a catch up before they go! More details still to come!

# Notices



## Profile Books

We will write 'story' in the comments column of the sign-in sheet when there is a new story in your child's book. You may take your child's book home but ask that you return it once you've finished reading and adding comments etc. We will aim to have at least two individual stories as well as a group story, art and other relevant work each term. We will include a 'Parent's voice' bubble for your feedback/input as this helps us to learn about what your child gets up to when they are not here! The profile books are also a source of communication between us (kaiako) and you (the whanau). Feel free to add your own photos or stories from home :-)

# Notices

- ☺ **We would love your egg shells for crushing and putting on our garden please.**
- ☺ **Please may we have your spare plastic bags.**
- ☺ **Please remember that if you wish to speak with staff us about any concerns you might have or just to discuss your child's development you can either pull one of us aside in the morning or if you wish to have a longer discussion you can make a time before 9am or after 3pm to come and meet with us.**
- ☺ **We love having whanau in to Kauri to share their hobbies. Interests etc. E.g. Sara (Will's Mum) came in to share a food growing project with us and planted seeds with the tamariki. Let us know if you have time to spare and want to come in!**
- ☺ **If your child comes home in spare 'Kauri' clothes, please return asap as they are used on a daily basis due to water play and wet sand! Many thanks!**
- ☺ **Remember that if you are waiting at pick-up times, you can look at your child's profile book and make comments on the stories (write in the white spaces). You can also take a squizz at the class journal to see what's been happening during the term.**

## **Important Reminder**

- \* Please note that some children are enrolled to start at 8:45am and 9 am. If you wish your child to start early please feel free to speak to the staff and have your child's enrolment changed.
- \* If you need to drop your child early on a 'one off' occasion please make necessary arrangements with a staff before hand.
- \* **We send children down to put their shoes on and wait by their bags at 12:55pm or 2:55pm. If you are late then this means a staff member has to supervise your child until you arrive. After 1pm and 3pm Staff have other commitments (work or personal) and if you know you wont be there on time then please phone so that we can direct your child as necessary. We generally have afternoon tea at 2:30pm so if you need to pick up 10 or 15 minutes early then that's fine.**

We appreciate your co-operation. Thanks